



THE VEHICLE

Washtenaw Area Transportation Study

October 2006

Vol. 4

NON-MOTORIZED PLAN COMPLETE

The Non-motorized Plan for Washtenaw County was adopted by the WATS Policy Committee on September 20, 2006. WATS worked with local communities, area youths and interested members of the public to create a future vision for the non-motorized system of Washtenaw County. Over 600 future non-motorized improvements totaling over 1,500 miles have been identified as part of the Plan. The estimated total cost of the improvements is more than 100 million dollars. A set of goals and objectives was created to facilitate the development of the plan. The Plan also includes six policies, which provide guidance to local communities on how to implement future improvements. WATS will be working with the Washtenaw County Department of Planning and Environment to develop methods of incorporating the plan in to local communities Master Plans or Zoning Ordinances. The plan will be updated periodically as part of the Long Range Transportation Plan for Washtenaw County.



The full plan is available on the WATS website at www.miwats.org/nonmotorized/nonmotorized.htm

Chart 1 is a pie chart showing the mileage of the types of improvements by percentage. Chart 2 shows the estimated cost in thousands of the future improvements by percentage.

ALSO IN THIS ISSUE...

PAGE 2

WASHTENAW COUNTY TRANSIT PLAN

2006 ASSET MANAGEMENT COMPLETE

PAGE 3

NEW STAFF AT WATS

AMENDMENTS TO THE 2030 LONG RANGE PLAN

TRANSPORTATION IMPROVEMENT PROGRAM

PAGE 4

LATEST ADDITIONS TO THE WATS LIBRARY

Chart 1

Future Non-motorized Improvement Types by Mileage

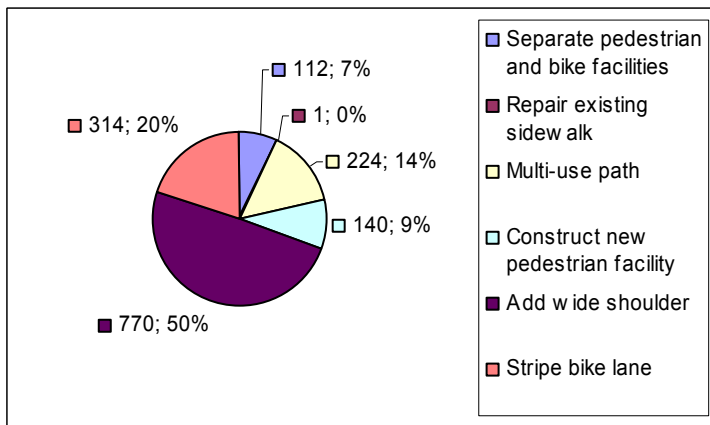
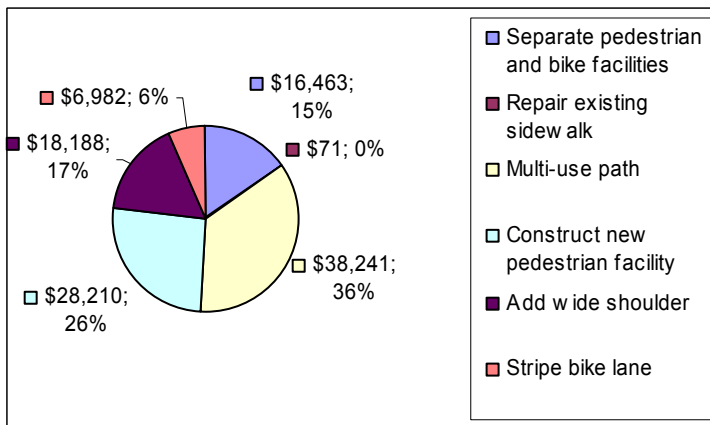


Chart 2

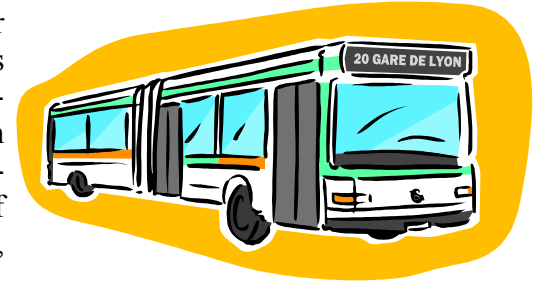
Future Non-motorized Improvement Types by Cost (000's)



WASHTENAW COUNTY TRANSIT PLAN

As part of the continuing, coordinated and comprehensive transportation planning process, the Washtenaw Area Transportation Study (WATS) is initiating the development of a Transit Plan for Washtenaw County. This plan will help guide the planning, funding and implementation of public transit in Washtenaw County.

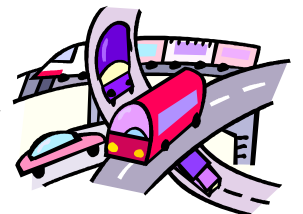
The Transit Plan will identify existing service levels and look for feasible and fundable solutions to provide transportation options and improve the transit service in Washtenaw County. The Washtenaw County Transit Plan will examine the current transit system in Washtenaw County and recommend an appropriate level of service based on development patterns. This plan is a continuation of the Western Washtenaw Regional Coordination Transit Study, which WATS completed in May of 2006.



The kick off meeting for the Plan was held on September 27, 2006 in the Assembly Room of the Washtenaw County Road Commission. Elected Officials from Washtenaw County and members of the Steering Committee attended the meeting. At the meeting draft Goals and Objectives, a detailed timeline, and outline of the study were discussed. The Steering Committee will meet a minimum of six times over the next year to help guide the development of the plan. The Elected Officials will meet three times over the next year in order to be updated on the development of the Transit Plan. There will be four public meetings during the development of the Transit Plan with the first scheduled for October. Contact Matthew Raschke, Associate Transportation Planner, for more information about the Washtenaw County Transit Plan or check out the WATS website, www.miwats.org, for updates and upcoming meetings.

2006 ASSET MANAGEMENT COMPLETE FOR WASHTENAW COUNTY

WATS staff, along with representatives from the Michigan Department of Transportation (MDOT) and the Washtenaw County Road Commission (WCRC) completed the asset management data collection for 2006 in the beginning of September. All paved federal aid eligible roads were rated, which totals about 921 miles of surface ratings.



Four years ago, the State of Michigan appointed the Asset Management Council to administer the data collection process. The Asset Management Council requires regional transportation agencies to conduct the annual surface rating program in partnership with MDOT and the Road Commission. An asset management system can be used to evaluate investment strategies as well as recommend strategies to maximize the effectiveness of available resources.

Pavement Surface Evaluation and Rating System (PASER) is used to assign a rating from "1" (failed road) to "10" (new road/complete reconstruction). The Washtenaw County information is combined with data from the entire state and a report is provided to the State Asset Management Council. The 2003, 2004 and 2005 data is available for each community. For each community there are ratings using descriptive categories from "Excellent" to "Failed." Possible improvements are shown in a Recommended Action graph, which shows the recommended action for the pavement based on the rating.

WATS staff has nearly completed the evaluation of 2006 Asset Management data. Please keep an eye out on www.miwats.org for the updated ratings.

WATS HIRES STAFF TO CONTINUE CRASH PROGRAM

Susan Burleigh joined the WATS team as a Data Entry Specialist in August of 2006. Susan has a Bachelor of Science in Architecture from the University of Michigan. She comes to us with a diverse work background that includes 13 years experience with architectural firms designing commercial, retail, and government projects, peer counseling and administrative work for Arbor Hospice Adult Bereavement Department, and working with Special Education students in the Dexter Community School District.

Susan is a long time resident of Washtenaw County and enjoys canoeing and fishing on the Huron River and cross-country skiing in our Metroparks.



Susan Burleigh

AMENDMENTS TO THE 2030 LONG RANGE PLAN



The Washtenaw County Road Commission has requested to amend the 2030 Long Range Plan for Washtenaw County. The Road Commission will be deleting federal funding from an intersection improvement project located at Geddes and LeForge Road. Deleting the federal funding will allow the Road Commission to add two non-motorized projects. The non-motorized projects that will be added to the 2030 Long Range Plan are a project along Geddes Road from Prospect Road to Superior Road and a countywide border to border trail. Detailed information about the Long Range Plan projects submitted for amendment can be found on the WATS website, www.miwats.org. WATS will be accepting comments on the 2030 Long Range Plan amendments until October 31, 2006.

TRANSPORTATION IMPROVEMENT PROGRAM

WATS has amended the FY 2006-2008 Transportation Improvement Program for Washtenaw County. An updated list of all federally funded projects in Washtenaw County can be found on the WATS website, www.miwats.org.

WATS will begin developing the FY 2008-2011 Transportation Improvement Program in October of 2006. Once the new FY 2008-2011 Transportation Improvement Program is complete the program will be posted on the WATS website for public review and comment. FY 2008-2011 projects will be submitted to Southeast Michigan Council of Governments by February of 2007.



LATEST ADDITIONS TO THE WATS LIBRARY

Current

- ◆ 2005 Annual Air Quality Report. Air Quality Division of the Michigan Department of Environmental Quality
- ◆ Funding Resources for Investing in the Transportation System of Southeast Michigan, 2006. Southeast Michigan Council of Governments
- ◆ Asset Management Road Condition Report, 2005. Southeast Michigan Council of Governments
- ◆ MDOT Freeway Courtesy Patrol in Southeast Michigan: 2005 Evaluation Report. Southeast Michigan Council of Governments
- ◆ Travel and Environmental Implications of School Siting. United States Environmental Protection Agency
- ◆ Areotropolis, A New City: Willow Run to Detroit Metro. University of Michigan A. Alfred Taubman College of Architecture and Urban Planning



Historical

- ◆ A Summary: Transportation Equity Act for the 21st Century Michigan. United States Department of Transportation
- ◆ Transportation Equity Act for the 21st Century Brochures. United States Department of Transportation
- ◆ Community Impact Assessment: A Quick Reference for Transportation. United States Department of Transportation: Federal Highway Administration

